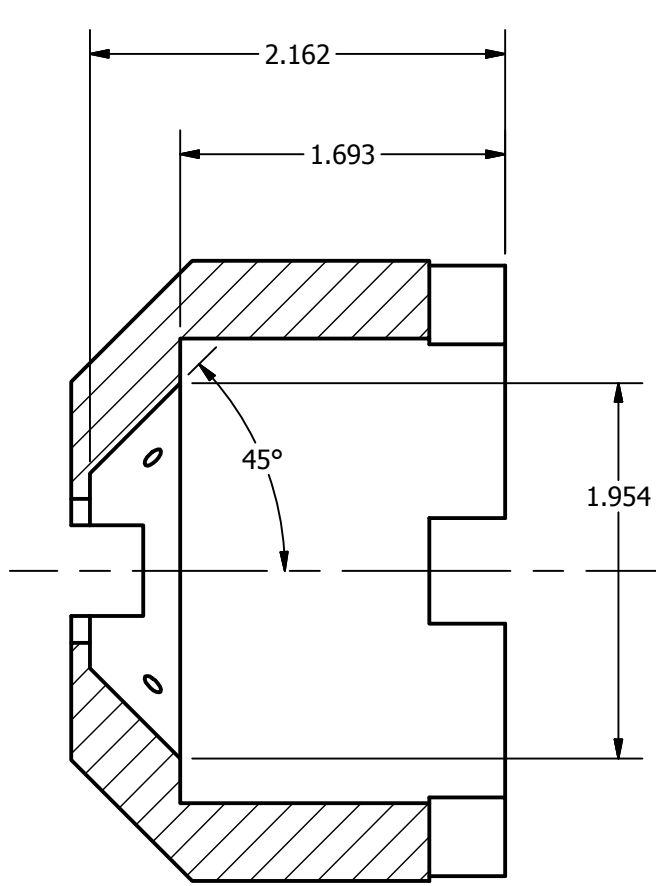


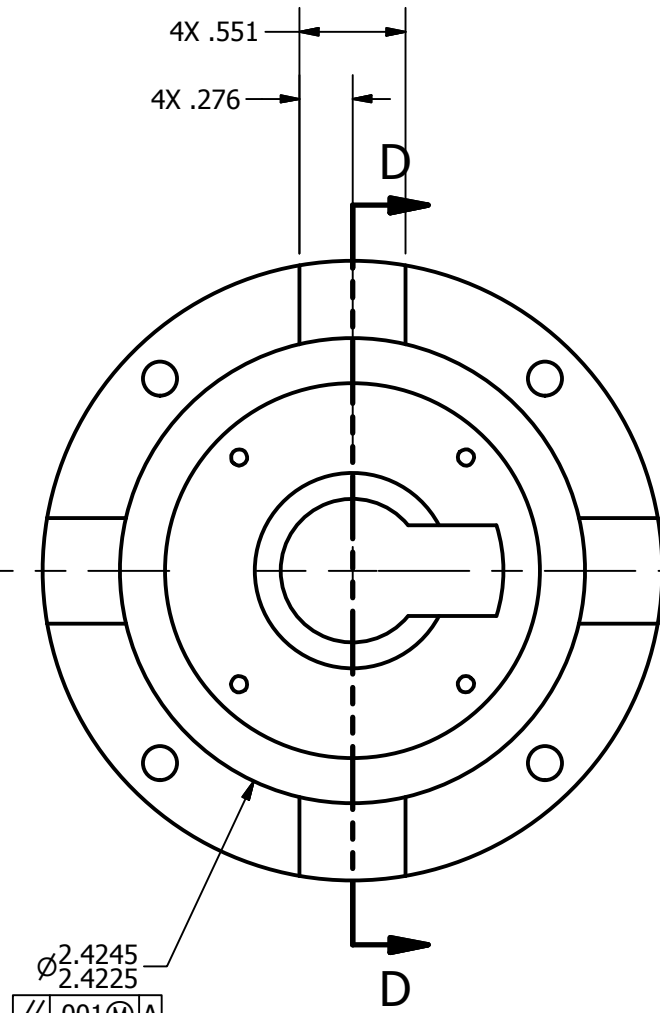
GENERAL NOTES:

- 1. MATERIAL: **ALUMINUM, 6061-T651**
- 2. SPECIAL FINISH: **ANODIZE PER MIL-A-8625F, TYPE II, CLASS 2 (BLACK)**
- 3. SURFACE ROUGHNESS (UNLESS SPECIFIED OTHERWISE): **125 Ra** (AVERAGE MICRO-INCHES)
- 4. INTERPRET DIMENSIONS AND TOLERANCES PER ASME Y14.5M-1994
- 5. DEBURR AND BREAK ALL SHARP EDGES, MAX 0.010" (UNLESS SPECIFIED OTHERWISE)
- 6. PARTS ARE TO BE CLEAN AND FREE OF OIL, GREASE, AND OTHER CONTAMINANTS
- 7. DIMENSIONS INCLUDE ANODIZING, ELECTROPLATING, AND CHEMICALLY APPLIED FINISHES IF APPLICABLE

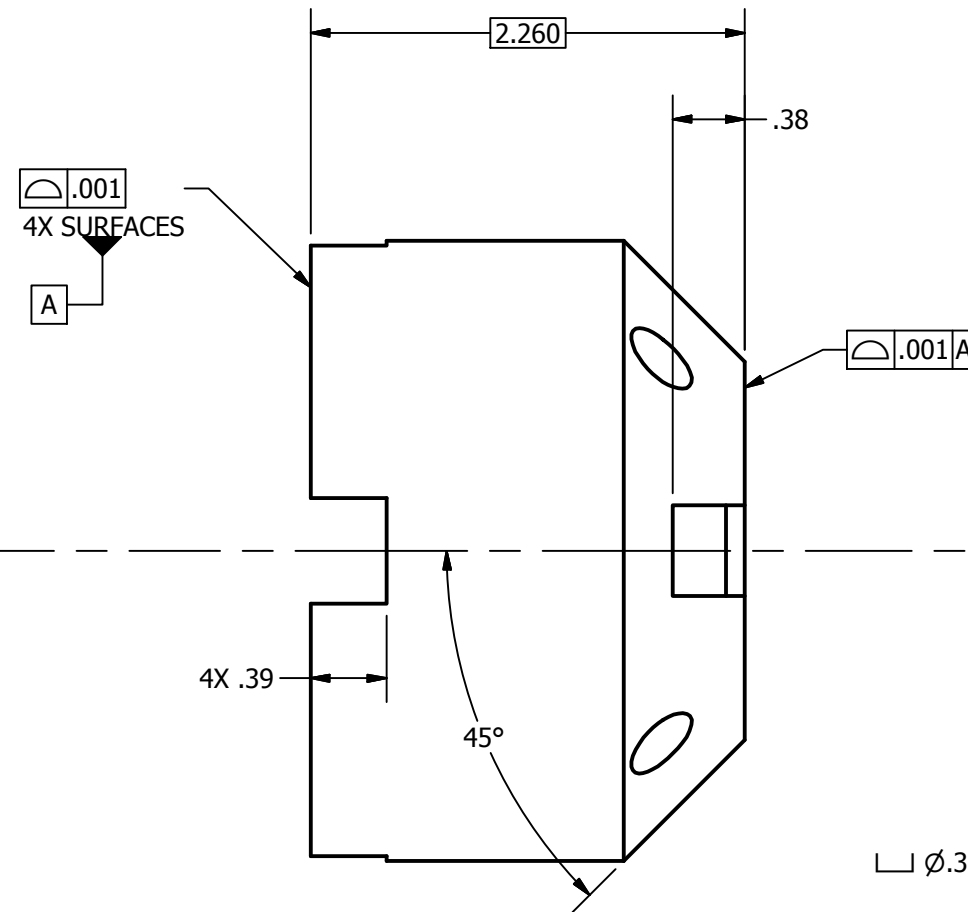
ZONE		REV	REVISION HISTORY	DATE	APPROVED
		-	INITIAL RELEASE	6/9/2016	HHMI\flückingerd
B3		A	Changed dim of bore for easier fit.	7/12/2016	HHMI\flückingerd



SECTION D-D



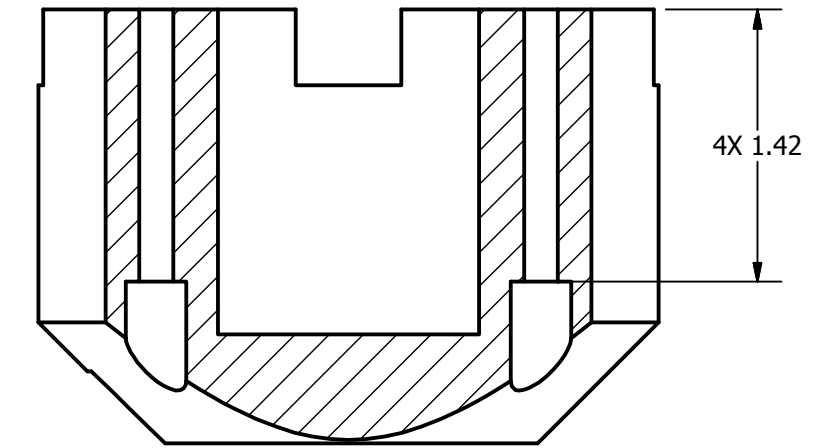
$\phi 2.4245$
 $\phi 2.4225$
 //0.001@A
 B



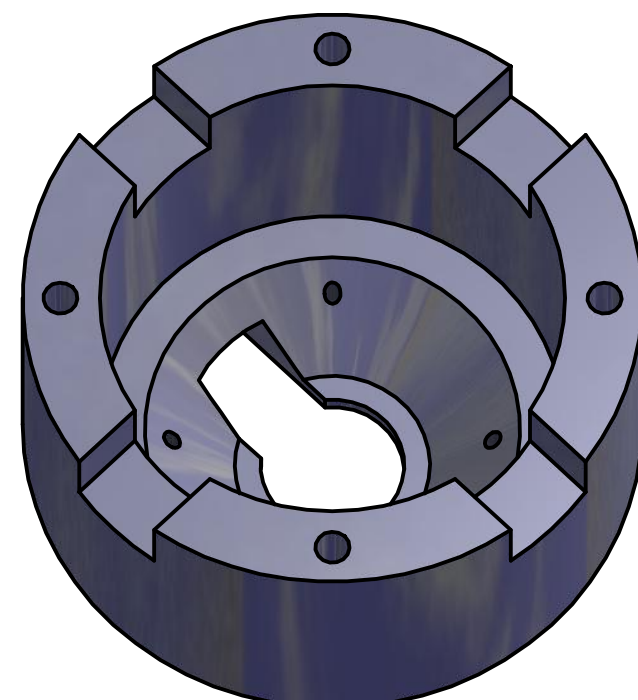
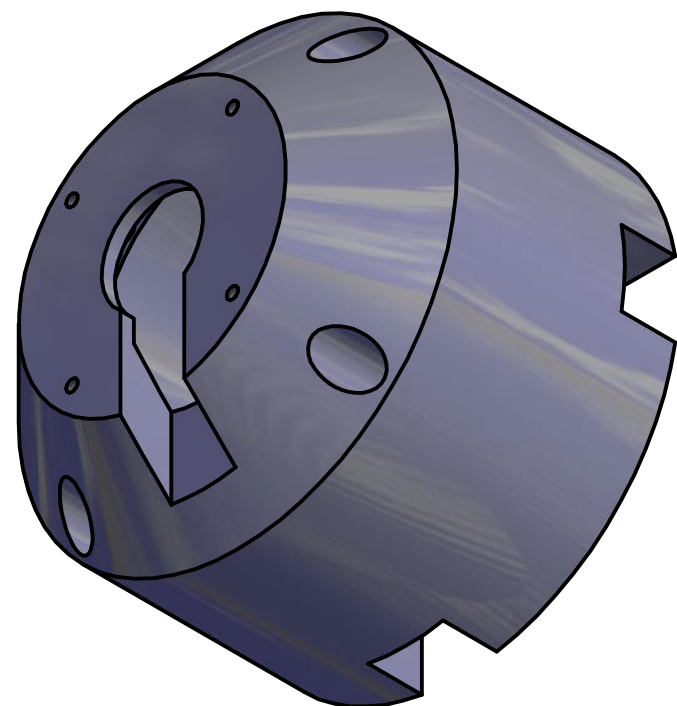
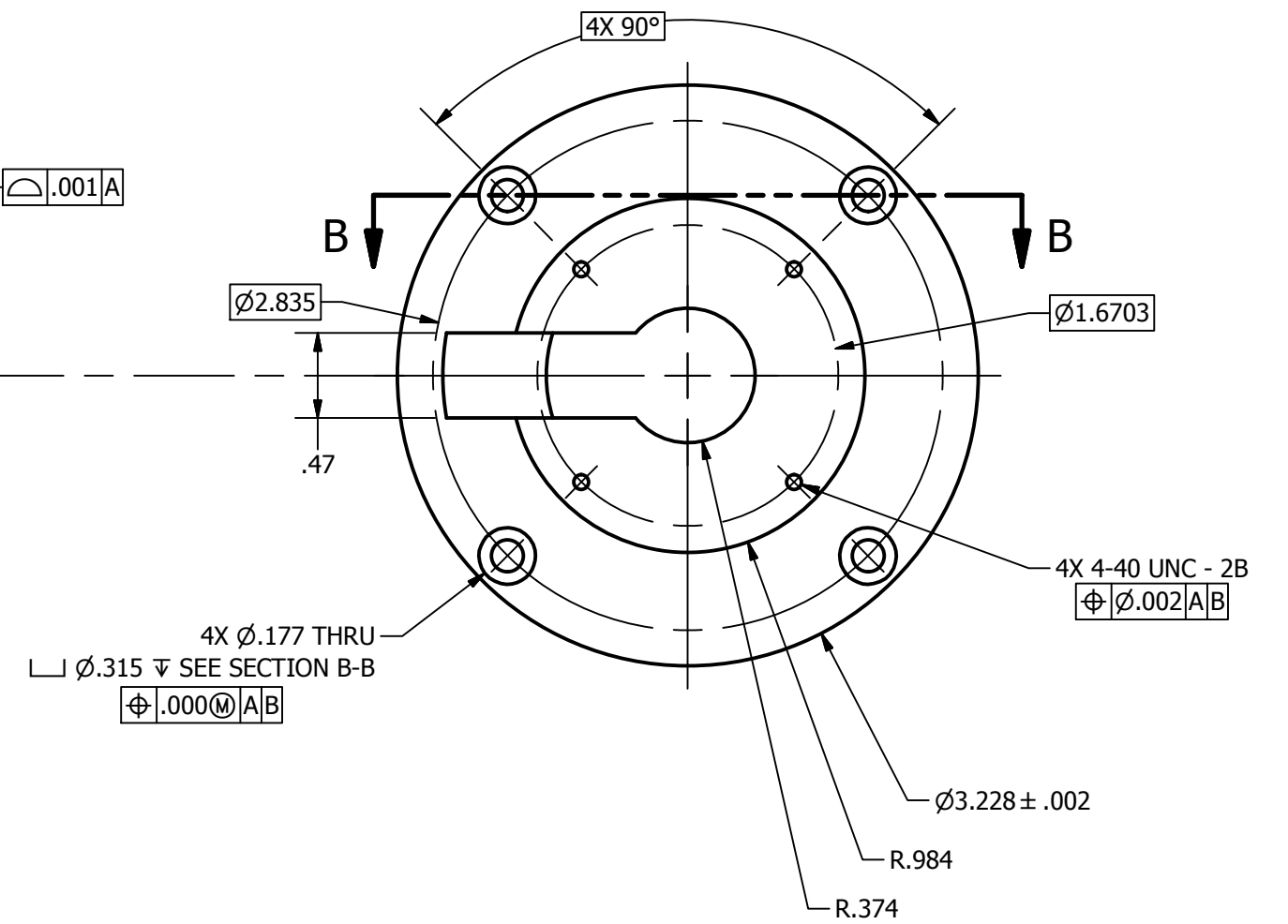
0.001
 4X SURFACES
 A

0.001A

4X $\phi .177$ THRU
 $\phi .315$ ∇ SEE SECTION B-B
 $\phi .000$ @A/B



SECTION B-B



NOTICE:
 INFORMATION CONTAINED IN THIS DOCUMENT OR ANY REPRODUCTION THEREOF, IS PROPRIETARY INFORMATION AND PROPERTY OF HOWARD HUGHES MEDICAL INSTITUTE. IT SHALL NOT BE DISCLOSED, COPIED, DUPLICATED OR USED FOR MANUFACTURE, PRODUCTION OR PROCUREMENT, WITHOUT THE EXPRESS WRITTEN PERMISSION OF HOWARD HUGHES MEDICAL INSTITUTE.

(UNLESS SPECIFIED OTHERWISE)
 PRIMARY UNITS: INCHES
 [SECONDARY UNITS]: MILLIMETERS
 PRIMARY TOLERANCES:
 X.X ± 0.020
 X.XX ± 0.010
 X.XXX ± 0.005
 X.XXXX ± 0.0005
 ANGULAR ± 0.5 DEG
 - DO NOT SCALE DRAWING -
 THIRD ANGLE PROJECTION:



AccessoryHolder_Simple.ipt

SIZE	PART NUMBER	REV	SHEET
C	J005700	A	1 OF 1